

## Test Report

No: 10361720(1)

Date: 17-Mar-2015

Page 1 of 5

Kester Components Pte Ltd  
500 Chai Chee Lane Singapore 469024

The following sample(s) was/were submitted and identified by/on behalf of the client as:

Sample Description : No Clean Flux 920CXF, 924FB, 951, 951BN, 952S, 955, 955-30A, 958, 959, 959T, 961E, 984, 985, 985M, 988, 986HF, 1865HPS, SH884K

Sample Receiving Date : 11-Mar-2015  
Testing Period : 11-Mar-2015 to 17-Mar-2015

Test Requested : In accordance with the RoHS Directive 2011/65/EU Annex II.

---

Test Result(s) : Please refer to next page(s).

Conclusion : Based on the performed tests on submitted sample(s), the results **comply with** the RoHS Directive 2011/65/EU Annex II ; recasting 2002/95/EC.

Signed for and on behalf of  
SGS Testing & Control Services Singapore Pte Ltd



---

Y.C. Tham  
Laboratory Manager

Test Location: 3 Toh Tuck Link, #01-02, Singapore 596228

This document is issued by the Company under its General Conditions of Service accessible at [www.sgs.com/terms\\_and\\_conditions.htm](http://www.sgs.com/terms_and_conditions.htm) and, for electronic format documents, subject to Terms and Conditions for Electronic Documents at [www.sgs.com/terms\\_e-document.htm](http://www.sgs.com/terms_e-document.htm). Attention is drawn to the limitation of liability, indemnification and jurisdiction issues defined therein. Any holder of this document is advised that information contained hereon reflects the Company's findings at the time of its intervention only and within the limits of Client's instructions, if any. The Company's sole responsibility is to its Client and this document does not exonerate parties to a transaction from exercising all their rights and obligations under the transaction documents. Any unauthorized alteration, forgery or falsification of the content or appearance of this document is unlawful and offenders may be prosecuted to the fullest extent of the law. Unless otherwise stated the results shown in this test report refer only to the sample(s) tested and such sample(s) are retained for 30 days only. This document cannot be reproduced except in full, without prior approval of the Company.

# Test Report

No: 10361720(1)

Date: 17-Mar-2015

Page 2 of 5

## Test Result(s):

Sample Description : No Clean Flux 920CXF, 924FB, 951, 951BN, 952S, 955, 955-30A, 958, 959, 959T, 961E, 984, 985, 985M, 988, 986HF, 1865HPS, SH884K

| Test Item(s):              | Unit  | Method  | Results     | MDL | RoHS Limit |
|----------------------------|-------|---|-------------|-----|------------|
| Cadmium(Cd)                | mg/kg | With reference to IEC62321-5 :2013. Analysis was performed by ICP/AES               | n.d.        | 2   | 100        |
| Lead (Pb)                  | mg/kg | With reference to IEC62321-5 :2013. Analysis was performed by ICP/AES               | n.d.        | 2   | 1000       |
| Mercury (Hg)               | mg/kg | With reference to IEC62321-4 :2013. Analysis was performed by ICP/AES               | n.d.        | 2   | 1000       |
| Hexavalent Chromium (CrVI) | mg/kg | With reference to IEC62321, Ed1:2008. Analysis was performed by UV/Vis Spectrometry | n.d.        | 2   | 1000       |
| <b>Sum of PBBs</b>         | mg/kg | With reference to IEC62321, Ed1:2008. Analysis was performed by GC/MS               | <b>n.d.</b> | -   | 1000       |
| Monobromobiphenyl          | mg/kg |   | n.d.        | 5   | -          |
| Dibromobiphenyl            | mg/kg |   | n.d.        | 5   | -          |
| Tribromobiphenyl           | mg/kg |   | n.d.        | 5   | -          |
| Tetrabromobiphenyl         | mg/kg |   | n.d.        | 5   | -          |
| Pentabromobiphenyl         | mg/kg |   | n.d.        | 5   | -          |
| Hexabromobiphenyl          | mg/kg |   | n.d.        | 5   | -          |
| Heptabromobiphenyl         | mg/kg |   | n.d.        | 5   | -          |
| Octabromobiphenyl          | mg/kg |   | n.d.        | 5   | -          |
| Nonabromobiphenyl          | mg/kg |   | n.d.        | 5   | -          |
| Decabromobiphenyl          | mg/kg |   | n.d.        | 5   | -          |
| <b>Sum of PBDEs</b>        | mg/kg |   | <b>n.d.</b> | -   | 1000       |
| Monobromodiphenyl ether    | mg/kg |   | n.d.        | 5   | -          |
| Dibromodiphenyl ether      | mg/kg |   | n.d.        | 5   | -          |
| Tribromodiphenyl ether     | mg/kg |   | n.d.        | 5   | -          |
| Tetrabromodiphenyl ether   | mg/kg |   | n.d.        | 5   | -          |
| Pentabromodiphenyl ether   | mg/kg |   | n.d.        | 5   | -          |
| Hexabromodiphenyl ether    | mg/kg |   | n.d.        | 5   | -          |
| Heptabromodiphenyl ether   | mg/kg |   | n.d.        | 5   | -          |
| Octabromodiphenyl ether    | mg/kg |   | n.d.        | 5   | -          |
| Nonabromodiphenyl ether    | mg/kg | n.d.  | 5           | -   |            |
| Decabromodiphenyl ether    | mg/kg | n.d.  | 5           | -   |            |

Test Location: 3 Toh Tuck Link, #01-02, Singapore 596228

This document is issued by the Company under its General Conditions of Service accessible at [www.sgs.com/terms\\_and\\_conditions.htm](http://www.sgs.com/terms_and_conditions.htm) and, for electronic format documents, subject to Terms and Conditions for Electronic Documents at [www.sgs.com/terms\\_e-document.htm](http://www.sgs.com/terms_e-document.htm). Attention is drawn to the limitation of liability, indemnification and jurisdiction issues defined therein. Any holder of this document is advised that information contained hereon reflects the Company's findings at the time of its intervention only and within the limits of Client's instructions, if any. The Company's sole responsibility is to its Client and this document does not exonerate parties to a transaction from exercising all their rights and obligations under the transaction documents. Any unauthorized alteration, forgery or falsification of the content or appearance of this document is unlawful and offenders may be prosecuted to the fullest extent of the law. Unless otherwise stated the results shown in this test report refer only to the sample(s) tested and such sample(s) are retained for 30 days only. This document cannot be reproduced except in full, without prior approval of the Company.

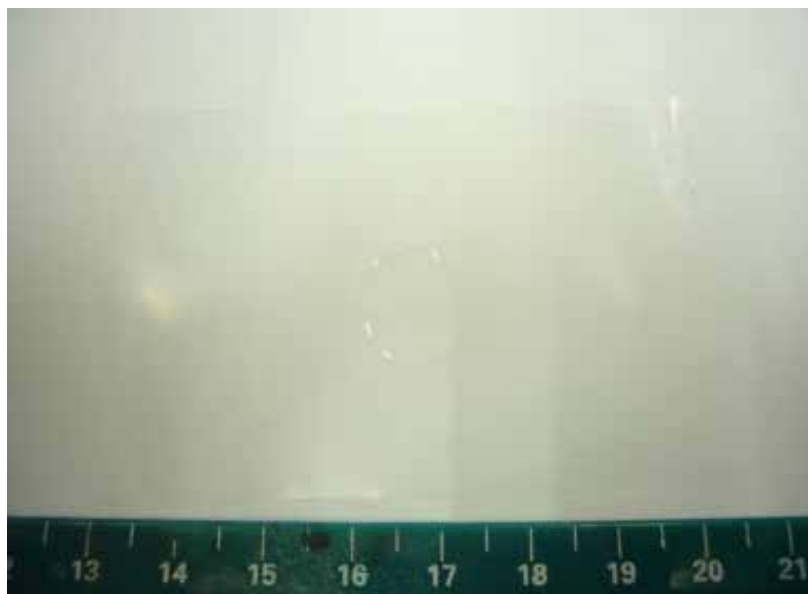
- Note:
- (1) mg/kg = ppm ; 0.1wt% = 1000ppm
  - (2) n.d.= Not Detected
  - (3) MDL = Method Detection Limit
  - (4) “-“ = Not regulated
  - (5) \* : Exceeds limit

Remarks: Sample received was totally dissolved by preconditioning method.  
Lab Analyst(s): Shaun, Pheng and ZH

**Sample photo:**

Sample Description : No Clean Flux 920CXF, 924FB, 951, 951BN, 952S, 955, 955-30A, 958, 959, 959T, 961E, 984, 985, 985M, 988, 986HF, 1865HPS , SH884K

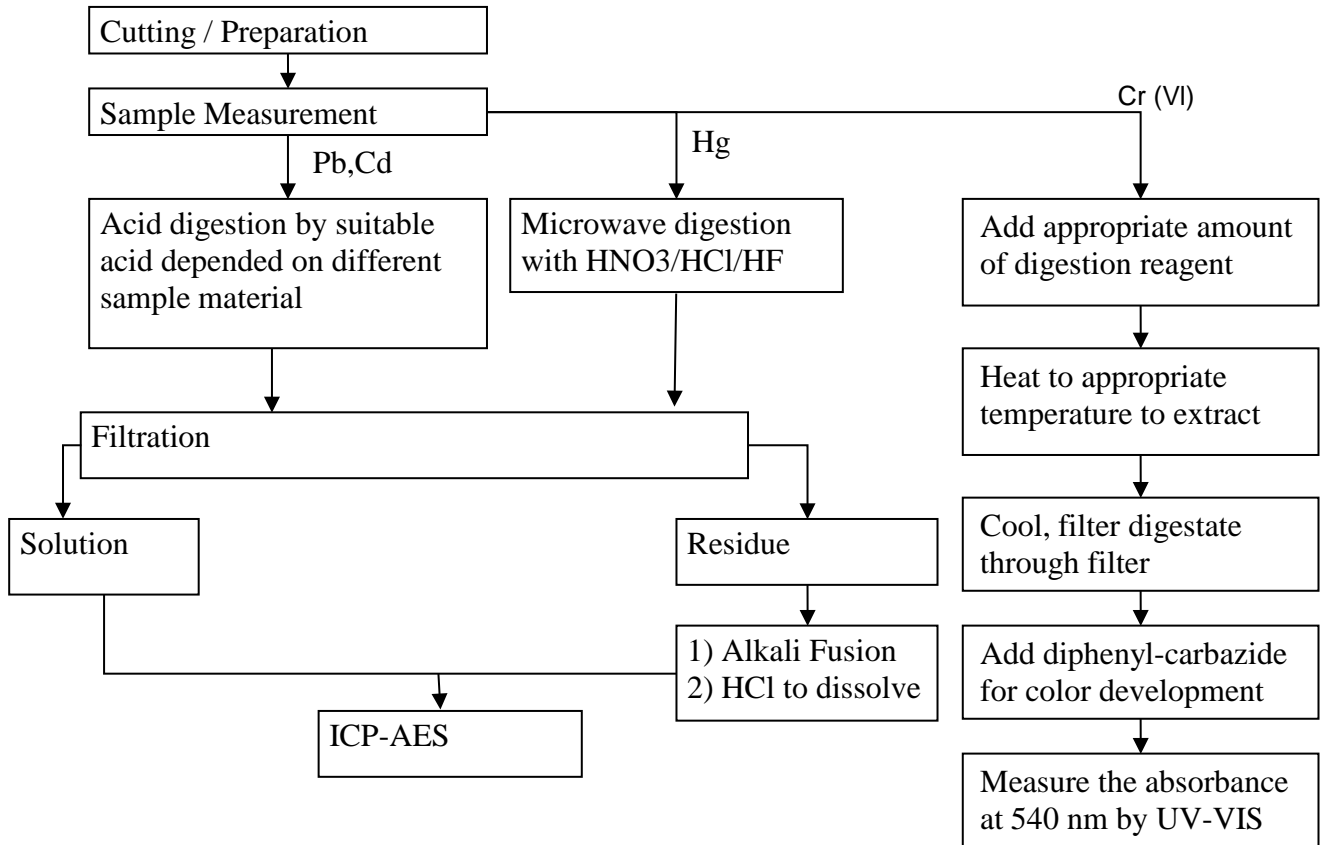
SGS authenticate the photo on original report only



Test Location: 3 Toh Tuck Link, #01-02, Singapore 596228

This document is issued by the Company under its General Conditions of Service accessible at [www.sgs.com/terms\\_and\\_conditions.htm](http://www.sgs.com/terms_and_conditions.htm) and, for electronic format documents, subject to Terms and Conditions for Electronic Documents at [www.sgs.com/terms\\_e-document.htm](http://www.sgs.com/terms_e-document.htm). Attention is drawn to the limitation of liability, indemnification and jurisdiction issues defined therein. Any holder of this document is advised that information contained hereon reflects the Company's findings at the time of its intervention only and within the limits of Client's instructions, if any. The Company's sole responsibility is to its Client and this document does not exonerate parties to a transaction from exercising all their rights and obligations under the transaction documents. Any unauthorized alteration, forgery or falsification of the content or appearance of this document is unlawful and offenders may be prosecuted to the fullest extent of the law. Unless otherwise stated the results shown in this test report refer only to the sample(s) tested and such sample(s) are retained for 30 days only. This document cannot be reproduced except in full, without prior approval of the Company.

**Process Flow of IEC 62321 (Pb, Cd, Hg & Cr<sup>6+</sup>)**



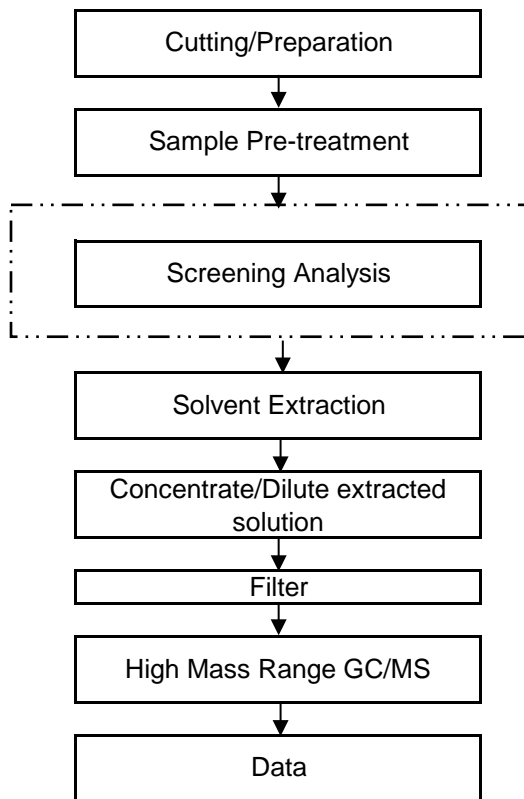
Remarks: Sample received was totally dissolved by preconditioning method. (CrVI method excluded)

Test Location: 3 Toh Tuck Link, #01-02, Singapore 596228

This document is issued by the Company under its General Conditions of Service accessible at [www.sgs.com/terms\\_and\\_conditions.htm](http://www.sgs.com/terms_and_conditions.htm) and, for electronic format documents, subject to Terms and Conditions for Electronic Documents at [www.sgs.com/terms\\_e-document.htm](http://www.sgs.com/terms_e-document.htm). Attention is drawn to the limitation of liability, indemnification and jurisdiction issues defined therein. Any holder of this document is advised that information contained hereon reflects the Company's findings at the time of its intervention only and within the limits of Client's instructions, if any. The Company's sole responsibility is to its Client and this document does not exonerate parties to a transaction from exercising all their rights and obligations under the transaction documents. Any unauthorized alteration, forgery or falsification of the content or appearance of this document is unlawful and offenders may be prosecuted to the fullest extent of the law. Unless otherwise stated the results shown in this test report refer only to the sample(s) tested and such sample(s) are retained for 30 days only. This document cannot be reproduced except in full, without prior approval of the Company.

### Process Flow of PBBs and PBDEs by GC/MS (IEC 62321)

First Testing Process → Optional screen process ..... Confirmation process ...→



\*\*\*End of Report\*\*\*

Test Location: 3 Toh Tuck Link, #01-02, Singapore 596228

This document is issued by the Company under its General Conditions of Service accessible at [www.sgs.com/terms\\_and\\_conditions.htm](http://www.sgs.com/terms_and_conditions.htm) and, for electronic format documents, subject to Terms and Conditions for Electronic Documents at [www.sgs.com/terms\\_e-document.htm](http://www.sgs.com/terms_e-document.htm). Attention is drawn to the limitation of liability, indemnification and jurisdiction issues defined therein. Any holder of this document is advised that information contained hereon reflects the Company's findings at the time of its intervention only and within the limits of Client's instructions, if any. The Company's sole responsibility is to its Client and this document does not exonerate parties to a transaction from exercising all their rights and obligations under the transaction documents. Any unauthorized alteration, forgery or falsification of the content or appearance of this document is unlawful and offenders may be prosecuted to the fullest extent of the law. Unless otherwise stated the results shown in this test report refer only to the sample(s) tested and such sample(s) are retained for 30 days only. This document cannot be reproduced except in full, without prior approval of the Company.